

Product catalogue

elvaco
COUNT ON IT

Table of contents

Infrastructure	4
Turn-key solutions	6
M-Bus Masters	9
M-Bus Gateways for Fixed Network	10
M-Bus Gateways for Mobile Network	12
Wireless M-Bus Receivers	14
Meters	16
Water meters	17
Heat meters	20
DIN-mounted electricity meters	25
Wall-mounted electricity meters	26
Sensors	28
Meter modules	30
Accessories	32
Enclosures	33
Antennas and antenna cables Wireless M-Bus	34
Antennas and antenna cables Mobile Network	35
Filters and amplifiers for Wireless M-Bus	36
General cables	36
Configuration and service	37
Network	37
Adapters	38
Converters	38
I/O Modules	39
Repeaters	39
Elvaco Services	40
Application examples	42

Reliability is not about the right product. It is about entirety.

Elvaco provides open end-to-end solutions for utility metering, aiming to support our customers to develop their sustainable business. We are specialized in energy connectivity and infrastructure, from meters and sensors to cloud-based systems and services.

Solutions

Elvaco offers a wide range of products and solutions to meet customer expectations of remote reading in most industries and applications.

Grid companies

Together with electricity meters from some of the world's largest meter manufacturers, we can offer efficient collection with high flexibility. There are grid companies of various sizes among our customers, both in rural and urban areas. Our products communicate through the existing GSM/GPRS infrastructure, which allow the customer to focus on installing meters instead of planning and building a new infrastructure.



District heating companies

During the last 30 years, together with district heating companies we have renewed, developed and optimized our solutions to cover most needs within remote metering for district heating. In our complete product portfolio we deliver all you need from the meter to billing. We collaborate with the leading global meter developers and the largest telecom companies to ensure that the experience from our products is the best possible.



Gas companies

Cost effective connectivity solutions for new or existing installation of gas meters. By using proven and standardized communication technologies, we provide smart gas grid solutions for the future. We provide end to end solutions including product and services to enable billing, analytics and smart gas grid possibilities. Our solution can be used with already installed meters and of course also with new smart gas meters using wired and wireless communication.



Water industries

We deliver high quality meters from e.g. GWF, Itron and Kamstrup with high precision and durability. In our meter portfolio we can offer the right technology depending on your specific needs, regardless if it's submetering of apartments or large scale bulk metering. However, metering without connectivity is a two legged chair. With Elvaco's solutions for collection of wired and wireless meters you will have a robust system with the flexibility to meet tomorrow's challenges in water metering.



Real estate companies

A common real estate company has either apartments in individual properties or properties in larger residential areas. Elvaco provides solutions based on customer needs. We offer everything from overall concepts to delivery of Gateways and meters. Elvaco delivers turn-key solutions for fast and easy installation in the field. We also deliver all additional equipment needed for a running installation, such as meters for water, electricity and indoor temperature.



Other industries

Our products are easy to adapt to a wide range of applications, for example charging poles for electric cars, solar power and greenhouse climate. Our customers are companies with the need of collecting meter values with automatic meter reading. All of our products are built on established standards which allow fast and easy implementation to existing billing and reporting systems.

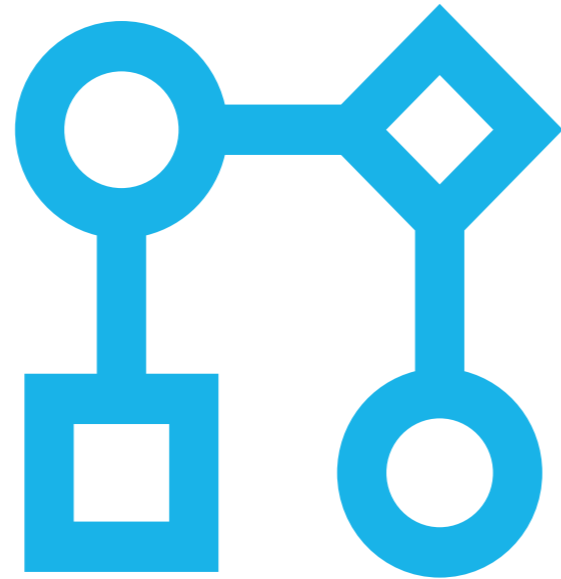


Infrastructure

Elvaco's Infrastructure segment is made up of products that enable collection, processing and delivery of meter data.

Products

Our M-Bus Gateways are used to read meters and deliver meter data in a suitable format to a receiving system. M-Bus Masters extends the number of meters a Gateway is able to use and Wireless M-Bus Receivers enables the Gateway to communicate with Wireless M-Bus meters. Elvaco also offers turn-key solutions, which are assembled, connected and ready to start using at delivery.



Gateway

The Gateway is a vital part of your metering system. It is mounted in a suitable location of a building and connected to the M-Bus system to read meters and deliver meter data to a receiving system via sms, ftp, http or e-mail.

We also offer Gateways that are able to deliver meter values for building automation systems via a selected protocol, for example Modbus, JSON or REST.



Our products are unique in their ability to deliver export files directly to billing systems in correct format without using expensive collection systems.



Turn-key solutions

Elvaco offers a number of Turn-key Solutions, specially developed to be integrated quickly and easily in a metering system. Each box consists of a Gateway, an M-Bus Master and a protective enclosure. Wireless M-Bus communication is available as an add-on option.



Box-build for Fixed Network with CMe3000

The box contains our M-Bus Gateway CMe3000 and an M-Bus Master from our CMeX10 Series to enable connection of up to 256 extra meters. The box is also equipped with a breaker to facilitate service work. Elvaco's Wireless M-Bus Receiver CMeX50 is available as an add-on option to enable communication with meters by Wireless M-Bus.

Product	Item No.
Box-build with CMe3000 for up to 8 meters (8T)	
CMc IP M-Bus for 8 meters in CM-Box 5	1100019
Box-build with CMe3000 for up to 32 meters (32T)	
CMc IP M-Bus for 32 meters in CM-Box 5	1100007
CMc IP M-Bus for 32 meters in CM-Box 12 with RS232	1100024
Box-build with CMe3000 for up to 64 meters (64T)	
CMc IP M-Bus for 64 meters in CM-Box 5	1100011
CMc IP M-Bus for 64 meters in CM-Box 12 with RS232	1100104
Box-build with CMe3000 for up to 128 meters (128T)	
CMc IP M-Bus for 128 meters in CM-Box 12 with RS232	1100015
Box-build with CMe3000 for up to 256 meters (256T)	
CMc IP M-Bus for 256 meters in CM-Box 12 with RS232	1100017
Box-build with Wireless M-Bus	
CMc IP Wireless M-Bus for 800 meters in CM-Box 12	1100101
CMc IP Enhanced Wireless M-Bus for 800 meters in CM-Box 12	1100225
Accessories	
Wireless M-Bus filter and amplifier kit with power supply	1100219
Wireless M-Bus filter and amplifier kit with power supply in CM Box 5	1100227

For information regarding cables, see section General cables on page 36

Turn-key solutions



Box-build for fixed network with CMe3100

The box contains our M-Bus Metering Gateway CMe3100, an M-Bus Master from CMeX10 Series to enable connection of up to 256 extra meters. The box is also equipped with a breaker to facilitate service work. Elvaco's Wireless M-Bus Receiver CMeX50 is available as an add-on option to enable communication with meters by Wireless M-Bus.

Product	Item No.
Box-build with CMe3100 for 8-256 meters (8T-256T)	
CGc IP M-Bus for 8 meters in CM-Box 12	1100191
CGc IP M-Bus for 32 meters in CM-Box 12	1100192
CGc IP M-Bus for 64 meters in CM-Box 12	1100193
CGc IP M-Bus for 128 meters in CM-Box 12	1100194
CGc IP M-Bus for 256 meters in CM-Box 12	1100195
CGc IP M-Bus for 8 meters in CM-Box 12 and LTE router in A-Box 15	1100248
CGc IP M-Bus for 32 meters in CM-Box 12 and LTE router in A-Box 15	1100249
CGc IP M-Bus for 64 meters in CM-Box 12 and LTE router in A-Box 15	1100250
CGc IP M-Bus for 128 meters in CM-Box 12 and LTE router in A-Box 15	1100251
CGc IP M-Bus for 256 meters in CM-Box 12 and LTE router in A-Box 15	1100252
Box-build with Wireless M-Bus	
CGc IP Enhanced Wireless M-Bus in CM-Box 12 for 8 meters*	1100233
CGc IP Wireless M-Bus in CM-Box 12 for 8 meters*	1100236
CGc IP Enhanced Wireless M-Bus in CM-Box 12 for 8 meters* and LTE router in A-Box 15	1100253
CGc IP Wireless M-Bus in CM-Box 12 for 8 meters* and LTE router in A-Box 15	1100254
Accessories	
Wireless M-Bus filter and amplifier kit with power supply	1100219
Wireless M-Bus filter and amplifier kit with power supply in CM Box 5	1100227

* The number of wireless meters can be extended up to 256 with a software license. In transparent M-Bus mode, the solution can handle up to 800 wireless meters.

For information regarding cables, see section General cables on page 36

For information regarding Add-ons and slave upgrades, see section about CMe3100 on page 10

Turn-key solutions



Box-build for mobile network with CMe2100

The box contains our M-Bus Metering Gateway CMe2100, an M-Bus Master from CMeX10 Series to enable connection of up to 128 extra meters. The box is also equipped with a breaker to facilitate service work. Elvaco's Wireless M-Bus Receiver CMeX50 is available as an add-on option to enable communication with meters by Wireless M-Bus.

M-Bus Masters

Elvaco's M-Bus Masters make it possible to extend the number of meters a Gateway of the CMe Series is able to use.



CMeX10 Series DIN-mounted M-Bus Masters

The CMeX10 Series makes it possible to extend the number of meters a CMe Series Gateway is able to use by up to 256 extra unit loads. The product can also be used as a stand-alone M-Bus Master in an existing M-Bus system through its RS232 interface. The CMeX10 Series is equipped with a unique IR Pass Through function, which makes it possible to combine multiple CMe/CMeX products by mounting them side by side.

Product	Item No.
Box-build with CMe2100 for up to 8 meters (8T)	
CMc GPRS M-Bus for 8 meters in CM-box 3	1100022
Box-build with CMe2100 for up to 32 meters (32T)	
CMc GPRS M-Bus for 32 meters in CM-box 5	1100023
CMc GPRS M-Bus for 32 meters in CM-box 12 with RS232	1100109
Box-build with CMe2100 for up to 64 meters (64T)	
CMc GPRS M-Bus for 64 meters in CM-box 5	1100105
CMc GPRS M-Bus for 64 meters in CM-box 12 with RS232	1100106
Box-build with CMe2100 for up to 128 meters (128T)	
CMc GPRS M-Bus for 128 meters in CM-box 12 with RS232	1100025
Box-build with wireless M-Bus	
CMc GPRS Wireless M-Bus for 128 meters* in CM-box 12 with RS232	1100095
CMc GPRS Enhanced Wireless M-Bus for 128 meters* in CM-Box 12	1100223
Accessories	
Wireless M-Bus filter and amplifier kit with power supply	1100219
Wireless M-Bus filter and amplifier kit with power supply in CM-Box 5	1100227

* In Transparent M-Bus mode, the solution can handle up to 800 meters.

For information regarding antennas and cables, see section Mobile network on page 35

Product	No. of meters	RS232	Maximum cable length	No. of DIN modules	Item No.	E No.
CMeX10	32		1000 m	2	1050009	0981802
CMeX11	64		1000 m	2	1050050	0981803
CMeX10S	32	X	5000 m	6	1050059	0981804
CMeX11S	64	X	5000 m	6	1050060	0981805
CMeX12S	128	X	5000 m	6	1050051	0981806
CMeX13S	256	X	5000 m	6	1050052	0981807

M-Bus Gateways for Fixed Network

Elvaco's M-Bus Gateways for fixed network enable reading of M-Bus meters by a chosen schedule and delivery of meter data via the fixed network.



CMe3100 DIN-mounted M-Bus Metering Gateway for Fixed Network

CMe3100 is an M-Bus Metering Gateway for Fixed Network that reads up to 512 meters, compiles meter data in customized reports and delivers it to a receiving system by a set schedule and integration protocol via the fixed network. It is compatible with all meters that use the M-Bus standard protocol and Elvaco's CMe/CMEx Series. CMe3100 is easily configured and updated through its web interface and supports a wide range of integration protocols, such as ModBus, DLMS, JSON and REST, which makes it a viable solution for many different types of metering projects. Through the continuous readout feature, meter data can be delivered in real-time, which might for example be used in an automatic control system. CMe3100 is equipped with a flexible licensing scheme, which allows for a cost-effective customization at the purchase point as well as the possibility to later extend the product functionality without changing the hardware.

Product	Item No.	E No.
CMe3100 M-Bus Metering Gateway for Fixed Network, 8 meters	1100232	0981856
CMe3100 M-Bus Metering Gateway for Fixed Network, 32 meters	1100129	0981844
CMe3100 M-Bus Metering Gateway for Fixed Network, 64 meters	1100130	0981845
CMe3100 M-Bus Metering Gateway for Fixed network, 128 meters	1100131	0981846
CMe3100 M-Bus Metering Gateway for Fixed Network, 256 meters	1100132	0981847
CMe3100 M-Bus Metering Gateway for Fixed Network, 512 meters	1100133	-
Meter capacity licenses		
CMe3100 Meter license upgrade, 8-32 meters	1060004	N/A
CMe3100 Meter license upgrade, 8-64 meters	1060005	N/A
CMe3100 Meter license upgrade, 8-128 meters	1060006	N/A
CMe3100 Meter license upgrade, 8-256 meters	1060007	N/A
CMe3100 Meter license upgrade 8-512 meters	1060024	N/A
CMe3100 Meter license upgrade 32-64 meters	1060008	N/A
CMe3100 Meter license upgrade 32-128 meters	1060009	N/A
CMe3100 Meter license upgrade 32-256 meters	1060010	N/A
CMe3100 Meter license upgrade 32-512 meters	1060025	N/A
CMe3100 Meter license upgrade 64-128 meters	1060011	N/A
CMe3100 Meter license upgrade 64-256 meters	1060012	N/A
CMe3100 Meter license upgrade 64-512 meters	1060026	N/A
CMe3100 Meter license upgrade 128-256 meters	1060013	N/A
CMe3100 Meter license upgrade 128-512 meters	1060027	N/A
CMe3100 Meter license upgrade 256-512 meters	1060028	N/A
Add-on licenses		
CMe3100 Add-on license ModBus	1060014	0981848
CMe3100 Add-on license Rest	1060015	0981849
CMe3100 Add-on license JSON	1060016	0981850
CMe3100 Add-on license DLMS	1060020	0981857
CMe3100 Add-on Stream Mode (Software)	1060023	-

For information about cables, see section General cables on page 36

M-Bus Gateways for Fixed Network



CMe3000 DIN-mounted M-Bus Gateway for fixed network

The CMe3000 is a flexible and cost-effective M-Bus Gateway. It is compatible with all ABB DIN-mounted electricity meters equipped with IR interface as well as all other meters that comply with the M-Bus standard. The CMe3000 uses an internal web interface which enables it to be configured and updated remotely. CMe3000 can handle up to 8 loads, but can easily be upgraded with an M-Bus master from the CMEx10 Series.

Product	Item No.	E No.
CMe3000 M-Bus Gateway for Fixed Network	1050015	0981801

For information regarding cables, see section General cables on page 36

M-Bus Gateways for Mobile Network

Elvaco's Gateways for Mobile Network enable collection of meter data through the M-Bus protocol and delivery of meter reports via GSM/GPRS.



CMe2100 DIN-mounted M-Bus Metering Gateway for Mobile Network

CMe2100 is a flexible and cost-effective M-Bus Metering Gateway with logging functionality which is used for reading of M-Bus meters and delivery of meter data reports by a set schedule and integration protocol. CMe2100 is compatible with all ABB DIN-mounted electricity meters equipped with IR interface and all other meters that comply with the M-Bus standard. CMe2100 uses open protocol, which makes it quick and easy to integrate into existing systems. It is configurable remotely, which means that you never have to visit the site to perform updates. CMe2100 can handle up to 8 loads, but can easily be upgraded with an M-Bus master from the CMeX10 Series.

Product	Item No.	E No.
CMe2100 (gen.3) M-Bus Metering Gateway for Mobile Network	1050123	0981859
CMe2100 LTE M-Bus Metering Gateway for Mobile Network	-	-

For information regarding antennas and cables, see section Mobile network on page 35

M-Bus Gateways for Mobile Network



CMi-Box M-Bus Metering Gateway for Mobile Network

The box contains the Wireless M-Bus Receiver CMi5110 and the Integrated Meter Connectivity Module CMi2110. It means that the solution can communicate with meters through the Wireless M-Bus protocol and deliver meter data reports via GSM/GPRS to a receiving system. The box is available with a 24 V or 230 V power supply, as well as with an internal or external antenna. It can also be ordered with Wired M-Bus.

The CMi-Box is also available in an enhanced version with built-in filter and amplifier which with its powerful performance optimizes the collection and reduces the number of products on site. The enhanced CMi-Box has 2-3 times higher performance than the previous CMi-Box, which means that fewer products are required to achieve the same result.

Product	Power supply		Antenna, mobile network		Antenna, Wireless M-Bus		Item No.
	24 V	230 V	Internal	External	Internal	External	
Wireless M-Bus							
CMi-Box 24 V internal antenna	X				X	X	1100121
CMi-Box 230 V internal antenna		X			X	X	1100122
CMi-Box 24 V external antenna*	X				X		1100123
CMi-Box 230 V external antenna*		X			X		1100124
CMi-Box 24 V 2 x internal antenna	X		X			X	1100174
CMi-Box 230 V 2 x internal antenna		X	X			X	1100156

Enhanced Wireless M-Bus

CMi-Box 24 V external antenna	X		X			X	1100312
CMi-Box 230 V external antenna		X	X			X	1100309
CMi-Box 24 V 2 x external antenna*	X				X	X	1100313
CMi-Box 230 V 2 x external antenna*		X			X	X	1100310
CMi-Box 24 V 2 x internal antenna	X		X			X	1100311
CMi-Box 230 V 2 x internal antenna		X	X			X	1100308

Product	Power supply		Antenna, mobile network		Item No.	
	24 V	230 V	Internal	External		
Wired M-Bus						
CMi-Box 24 V external antenna*	X				X	1100150
CMi-Box 230 V external antenna*		X			X	1100149

* Antenna is ordered separately

For information regarding antennas and cables, see section Mobile network on page 35

Wireless M-Bus Receivers

Elvaco develops and delivers Wireless M-Bus Receivers which enable Elvaco Gateways to communicate with meters by Wireless M-Bus. The receivers can also be integrated into existing M-Bus systems where wired meters are used.

Wireless M-Bus Receivers



CMeX50 DIN-mounted Wireless M-Bus Receiver

CMeX50 is a Wireless M-Bus Receiver which can be integrated in existing M-Bus systems or used together with Elvaco's CMe Series products. It communicates with wireless M-Bus meters via the wireless standards S1, S2, T1 and C1 and is compatible with all Wireless M-Bus meters on the market. CMeX50 handles up to 800 wireless M-Bus meters and guarantees secure transmission of data through individual encryption keys. The product also has a built-in M-Bus master for communication with up to 32 wired M-Bus meters.



CMi-Box Wireless M-Bus Receiver

The box contains the Wireless M-Bus Receiver CMi5110. It means that it communicates with up to 800 meters by Wireless M-Bus and with receiving systems by wired M-Bus. The box is available with a 24 V or a 230 V power supply, as well as with internal or external antenna.

The CMi-Box is also available in an enhanced version with built-in filter and amplifier which with its powerful performance optimizes the collection and reduces the number of products on site. The enhanced CMi-Box has 2-3 times higher performance than the previous CMi-Box, which means that fewer products are required to achieve the same result.

Product	Item No.	E No.
CMeX50 Wireless M-Bus Receiver	1050062	0981835
Accessories		
WM-Bus filter and amplifier kit with power supply	1100219	N/A
WM-Bus filter and amplifier kit with power supply in CM Box 5	1100227	N/A

For information regarding antennas and cables, see section *Wireless M-Bus* on page 34

Product	Item No.
Fully assembled in a protective enclosure Wireless M-Bus internal antenna	
CMi-Box 24 V	1100117
CMi-Box 230 V	1100118
Fully assembled in a protective enclosure Wireless M-Bus external antenna	
CMi-Box 24 V*	1100119
CMi-Box 230 V*	1100120
Fully assembled in a protective enclosure with built-in filter and amplifier	
CMi-Box 24 V internal antenna	1100306
CMi-Box 230 V internal antenna	1100304
CMi-Box 24 V external antenna*	1100307
CMi-Box 230 V external antenna*	1100305

* Antenna is ordered separately

For information regarding antennas and cables, see section *Wireless M-Bus* on page 34

Meters

High quality heat, water and electricity meters from well-renowned meter manufacturers.

Water meters

Bulk or apartment sized, we offer a flexible range of cost effective solutions.

Heat meters

Combine your meter of choice with our communication modules for a compact and cost-effective solution.

Electricity meters

Combine your meter of choice with our communication modules for a compact and cost-effective solution.



Water meters

Elvaco delivers warm and cold water meters from Itron. These are available as vane wheel or volumetric meters. Itron's Equascan technology enables delivery of meter data by Wireless M-Bus.



Itron Unimag with Equascan

Unimag is a compact vane wheel meter with single-jet technology which is easy to install and has high reliability. The register can be rotated in 360° to facilitate reading in any position. The meter communicates by Wireless M-Bus through Itron's Equascan technology.

Itron Aquadis+ with Equascan

Aquadis+ is a volumetric water meter designed for very high accuracy metering. The register can be rotated in 360° for comfortable reading in any position. The meter can be used in apartment-, residential- and industrial applications. It communicates by Wireless M-Bus through Itron's Equascan technology. The meter is also available with wired M-Bus.

"We are very pleased and have only positive experiences from our collaboration with Elvaco. All aspects, such as engineering, installation, education, support and operation have worked very well."

Afrim Alijevski, Electricity and energy engineer, Bostads AB VätterHem



Product	Item No.	RSK No.
Unimag, Q3 2,5, Dn 15, G 3/4", L 110 mm		
Unimag + PE Warm water meter, Wireless M-Bus	1100177	5182256
Unimag + PE Cold water meter, Wireless M-Bus	1100178	5143638
Aquadis+ Q3 2,5, Dn 15, G 3/4", L 110 mm		
Aquadis+ Warm water meter, M-Bus (1T)	1100069	5181660
Aquadis+ Warm water meter, Wireless M-Bus	1100210	N/A
Aquadis+ Cold water meter, M-Bus (1T)	1100070	5181647
Aquadis+ Cold water meter, Wireless M-Bus	1100211	N/A
Check valve		
Check valve DN15 Unimag Equascan	9950668	N/A
Check valve DN15 Aquadis/Flodis	9950705	N/A

Water meters

Elvaco delivers ultrasonic warm and cold water meters from the Danish company Kamstrup.



Kamstrup Multical 21

Multical 21 is an ultrasonic meter used for warm and cold water consumption metering in apartments, residential areas and industries. Ultrasonic flow measurement is based on the time difference method, and all measurements, readings, calculations and data communications are controlled by an advanced custom-designed electronic circuit. Multical 21 is easy to install and data can be read directly from the display, by optical interface or by Wireless M-Bus. The meter contains no moving parts, which prevents mechanical wear and effects from particles in the water. It is also vacuum sealed to stop moisture and condensation from entering the meter. Multical 21 has a unique combination of very high accuracy, long life and built-in Wireless M-Bus communication.

Product	Item No.	RSK No.
Multical 21		
Multical 21 Warm water meter 1,6m ³ /h, 3/4" x 110 mm, encrypted	9950430	5181662
Multical 21 Warm water meter 2,5m ³ /h, 3/4" x 110 mm, encrypted	9950431	5181663
Multical 21 Warm water meter 2,5m ³ /h, 1" x 105 mm, encrypted	9950432	5181664
Multical 21 Warm water meter 2,5m ³ /h, 1" x 130 mm, encrypted	9950433	5181665
Multical 21 Warm water meter 4,0m ³ /h, 1" x 130 mm, encrypted	9950434	5181666
Multical 21 Cold water meter 1,6m ³ /h, 3/4" x 110 mm, encrypted	9950435	5181649
Multical 21 Cold water meter 2,5m ³ /h, 3/4" x 110 mm, encrypted	9950436	5181650
Multical 21 Cold water meter 2,5m ³ /h, 1" x 105 mm, encrypted	9950437	5181651
Multical 21 Cold water meter 2,5m ³ /h, 1" x 130 mm, encrypted	9950438	5181652
Multical 21 Cold water meter 4,0m ³ /h, 1" x 130 mm, encrypted	9950439	5181653
Check valve		
Check valve 3/4"	9950539	N/A
Check valve 1"	9950540	N/A

Water meters

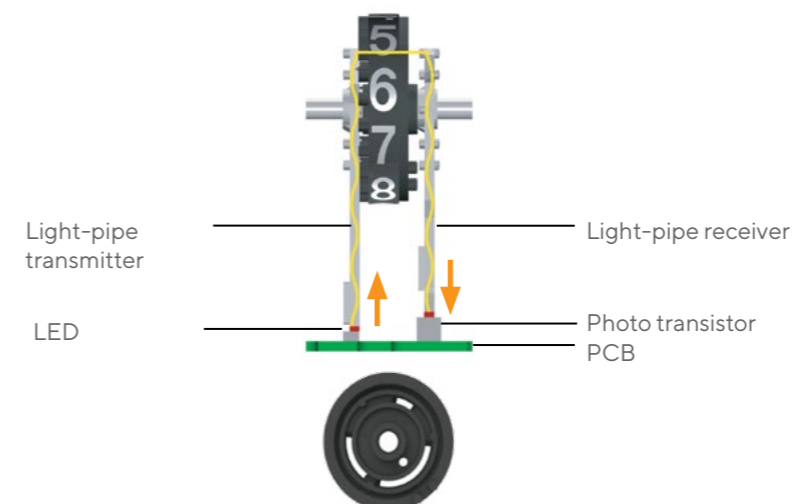
Elvaco delivers warm and cold water meters from GWF, a Swiss company with over 100 years of experience in metering.



GWF UNICOcoder

UNICOcoder is a single-jet water meter with high accuracy even at low flows. The meter can be mounted horizontally or vertically and its register can be rotated for easy readings in all positions. Meter values are optically read to ensure high accuracy and are communicated by M-Bus. Because of its patented technology, the meter requires no battery.

Product	Item No.	RSK No.
UNICOcoder Q3 2,5, Dn 15, G 3/4", L 110 mm		
UNICOcoder Warm water meter, M-Bus (2T)	9950507	5181659
UNICOcoder Cold water meter, M-Bus (2T)	9950506	5181646
Check valve		
Check valve	9950537	N/A



Battery-free meter with exact readings thanks to mechanic counters that are scanned through light pipes connected to LEDs.

Heat meters

Elvaco offers heat meters from Landis+Gyr, a Swiss company with more than 100 years of experience of metering. For these meters, Elvaco has developed the Integrated Meter Connectivity Module CMI2110, which is mounted directly in the meter to enable collection of meter data and delivery of metering reports via the mobile network by a chosen schedule and integration protocol.



Landis+Gyr UH50 (T550 ULTRAHEAT)

Landis+Gyr UH50 is a complete meter for measuring of heating and cooling, available in flow ranges from Qp 0.6 to Qp 60. It is easy to install and operate and has an "easy-to-read" display. It also has two slots for communication, for example M-Bus and GPRS and an analog output through option board. The meter has several power supply options, such as battery, 230 V and backup module.

Product	Wired M-Bus	Wireless M-Bus	GSM/GPRS	LoRa-WAN	NB-IoT	Item No.
L+G UH50 qp 0.6, G ¾", 110 mm, PT100, 230 VAC						
L+G UH50 Heat meter, M-Bus (1T)	X					9950104
L+G UH50 Heat meter, Wireless M-Bus		X				9950384
L+G UH50 Heat meter and CMI2110 (gen.3) Integrated MCM (8T/128 meters)			X			1100075
L+G UH50 qp 1.5, G 1", 130 mm, PT100, 230 VAC						
L+G UH50 Heat meter, M-Bus (1T)	X					9950386
L+G UH50 Heat meter, Wireless M-Bus		X				9950387
L+G UH50 Heat meter and CMI2110 (gen.3) Integrated MCM (8T/128 meters)			X			1100076
Meter Connectivity Modules						
L+G UH50 M-Bus slave (1T)	X					9950364
L+G UH50 Wireless M-Bus slave		X				9950399
CMI4110Int Integrated MCM for L+G UH50, LoRa, internal antenna				X		1050071
CMI4110Ext Integrated MCM for L+G UH50, LoRa, external antenna				X		1100301
CMI5110E Wireless M-Bus Receiver, external antenna*		X				1050064
CMI5110I Wireless M-Bus Receiver, internal antenna		X				1050067
CMI6110 Integrated MCM, NB-IoT, external antenna					X	-
Power modules						
Power supply L+G UH50 100-240 V CMip2110M						1050053
Power supply L+G UH50 24 VAC CMip2110						1050055
Battery backup L+G UH50 CMip2110						1050056
Retrofit kits						
CMI2110 (gen.3) Retrofit kit (8T/128 meters), 230 VAC, wall-mount antenna						1100027
CMI2110 (gen.3) Retrofit kit (8T/128 meters), 230 VAC, magnet-mount antenna						1100028

* Antenna is ordered separately

For information regarding antennas and cables, see section Mobile network on page 35

Heat meters



Landis+Gyr UC50 (calculator)

Landis+Gyr UC50 is a calculator for heating or cooling metering which can be used with any flow sensor. The calculator is easy to install and operate and has an "easy-to-read" display. It also has two slots for communication, for example M-Bus and GPRS and an analog output through option board. The calculator is available with several different power supply options, such as battery, 230 V and backup module. The calculator is delivered with the possibility of connecting both 2-wire and 4-wire measuring of the temperature sensor. It is also available for glycolic water.

Product	Wired M-Bus	Wireless M-Bus	GSM/GPRS	LoRa-WAN	NB-IoT	Item No.
L+G UC50, PT100, 230 VAC						
L+G UC50 Heat calculator, M-Bus (1T)	X					9950378
L+G UC50 Heat calculator, Wireless M-Bus		X				9950379
L+G UC50 Heat calculator and CMI2110 (gen.3) Integrated MCM (8T/128 meters)			X			1100077
L+G UC50, PT500, 230 VAC						
L+G UC50 Heat calculator, M-Bus (1T)	X					9950381
L+G UC50 Heat calculator, Wireless M-Bus		X				9950382
L+G UC50 Heat calculator and CMI2110 (gen.3) Integrated MCM (8T/128 meters)			X			1100078
Meter Connectivity Modules						
L+G UC50 M-Bus module (1T)	X					9950364
L+G UC50 Wireless M-Bus module		X				9950399
CMI4110Int Integrated MCM for L+G UH50, LoRa, internal antenna				X		1050071
CMI4110Ext Integrated MCM for L+G UH50, LoRa, external antenna				X		1100301
CMI5110E Wireless M-Bus Receiver external antenna*		X				1050064
CMI5110I Wireless M-Bus Receiver internal antenna		X				1050067
CMI6110 Integrated MCM, NB-IoT, external antenna					X	-
Power modules						
Power supply L+G UH50 100-240 V CMip2110M						1050053
Power supply L+G UH50 24 VAC CMip2110						1050055
Battery backup L+G UH50 CMip2110						1050056
Retrofit kits						
CMI2110 (gen.3) Retrofit kit (8T/128 meters), 230 VAC, wall-mount antenna						1100027
CMI2110 (gen.3) Retrofit kit (8T/128 meters), 230 VAC, magnet-mount antenna						1100028

* Antenna is ordered separately

For information regarding antennas and cables, see section Mobile network on page 35

Heat meters

Elvaco offers heat meters from the American company Itron. For these meter, Elvaco has developed the Integrated Meter Connectivity Module CMi2130, which is mounted directly in the meter to enable meter readouts and delivery of metering reports via the mobile network according to a chosen schedule and integration protocol. CMi2130 is compatible with Itrons calculator CF 51/55 and Itrons compact meter ECHO II.



Itron CF ECHO II

CF ECHO II is a compact meter from Itron's latest generation of ultrasonic heat meters. Electronic data processing results in high precision through the measuring area and has a higher precision than a class C meter. We offer meters in flow range from Qp0.6 to Qp15 (Dn 15 to Dn 50) with high accuracy. A wide range of flow sensors make the CF ECHO II flexible to use. All meters have a resistance to facilitate installation and removal. Other advantages of the meter include the high accuracy for both high and low flow measurements.

Product	Item No.
Itron ECHO II qp 0.6, G 3/4", 110 mm, PT100, 230 VAC	
Itron ECHO II Heat meter, M-Bus (1 T)	9950389
Itron ECHO II Heat meter and CMi2130 (gen.3) Integrated MCM (8T/128 meters)	1100079
Itron ECHO II qp 1.5, G 1", 130 mm, PT100, 230 VAC	
Itron ECHO II Heat meter, M-Bus (1 T)	9950391
Itron ECHO II Heat meter and CMi2130 (gen.3) Integrated MCM (8T/128 meters)	1100081
Meter Connectivity Modules	
Itron CF M-Bus module (1 T)	9950395
CMi4130Int Integrated MCM, LoRa, internal antenna	-
CMi4130Ext Integrated MCM, LoRa, external antenna	-
Power modules	
Power supply CF/ECHOII 100-240 VAC CMip2130	1050018
Retrofit kits	
CMi2130 (gen.3) Retrofit kit (8T/128 meters), 230 VAC, magnet-mount antenna	1100005

For information regarding antennas and cables, see section Mobile network on page 35

Heat meters



Itron CF 51/55 (calculator)

CF 51/55 is a calculator for heating or cooling for any flow sensor. The calculator is easy to install and operate and has an "easy-to-read" display. It is compatible with Itron's other products for heating and cooling and has a modular design that can be easily upgraded to meet future needs. CF 51/55 can be connected to any optional flow sensor with pulse output.

Product	Item No.
Itron CF 51 PT100, 230 VAC	
Itron CF 51 Heat calculator, M-Bus (1 T)	9950102
Itron CF 51 Heat calculator and CMi2130 (gen.3) Integrated MCM (8T/128 meters)	1100089
Itron CF 51 PT500, 230 VAC	
Itron CF 51 Heat calculator, M-Bus (1 T)	9950440
Itron CF 51 Heat calculator and CMi2130 (gen.3) Integrated MCM (8T/128 meters)	1100090
Itron CF 55 PT100, 230 VAC	
Itron CF 55 Heat calculator, M-Bus (1 T)	9950367
Itron CF 55 Heat calculator and CMi2130 (gen.3) Integrated MCM (8T/128 meters)	1100091
Itron CF 55 PT500, 230 VAC	
Itron CF 55 Heat calculator, M-Bus (1 T)	9950442
Itron CF 55 Heat calculator and CMi2130 (gen.3) Integrated MCM (8T/128 meters)	1100092
Meter Connectivity Modules	
Itron CF M-Bus module (1 T)	9950395
CMi4130Int Integrated MCM, LoRa, internal antenna	-
CMi4130Ext Integrated MCM, LoRa, external antenna	-
Power modules	
Power supply CF/ECHOII 100-240 VAC CMip2130	1050018
Retrofit kits	
CMi2130 (gen.3) Retrofit kit (8T/128 meters), 230 VAC, magnet-mount antenna	1100005

For information regarding antennas and cables, see section Mobile network on page 35

Heat meters

Elvaco delivers heat meters from Landis+Gyr, a Swiss company with over 100 years of experience from meter manufacturing.



Landis+Gyr T230

Landis+Gyr T230 is part of the new generation of heating and cooling meters based on ultrasonic technology. The meter is made of composite materials and is lightweight, durable, affordable and user-friendly. The meter is delivered with the calculator mounted on the flow pipe. It can easily be taken apart and mounted on a wall to facilitate the reading and avoid condensation when the meter is used to measure cooling. The meter is available with both wired and wireless M-Bus communication.

Product	Item No.
L+G T230 qp 0.6, G 3/4", 110 mm, PT500, 11 years battery	
L+G T230 Heat meter, M-Bus (1T)	9950451
L+G T230 Heat meter, Wireless M-Bus	9950518
Meter Connectivity Modules	
CMi4111 Integrated MCM, LoRa, internal antenna	-

DIN-mounted electricity meters

Elvaco offers DIN-mounted 1-phase, 3-phase and current transformer electrical meters from ABB. For these meters, Elvaco has developed the External Meter Connectivity Modules CMeX20 and CMeX20w, which enable ABB meters with IR interface to communicate meter data through M-Bus/Wireless M-Bus.



ABB B21, B23

B21 (1-phase) and B23 (3-phase) are compact electricity meters for direct connection of up to 65 A. The meters are mainly intended for DIN-rail mounting in cabinets or in small enclosures. The meters have clear markings on the front, a sturdy connector terminal and a backlit easy-to-read display. It measures active power, current, voltage, power factor and frequency.

ABB B24

B24 is an electricity meter (3-phase) with a compact design for connection to current transformers. It is designed for measuring active energy and for mounting on DIN-rail. The meter is suitable to use where currents are high and direct measurement is not possible. The transformer constant is easily changed directly on the meter. It has clear markings on the front, a sturdy connector terminal and a backlit easy-to-read display.

CMeX20/CMeX20w

CMeX20 and CMeX20w communicate with ABB meters via IR interface. The Meter Connectivity Modules collect metering data and deliver it to a receiving system by Wired (CMeX20) or Wireless (CMeX20w) M-Bus. The products are designed to begin conversion of meter data immediately after startup.

Product	Item No.
ABB B21 (1-phase)	
ABB B21 Electricity meter, incl. M-Bus (1T)	9950555
ABB B21 Electricity meter and CMeX20w External MCM, Wireless M-Bus	1100199
ABB B23 (3-phase)	
ABB B23 Electricity meter, incl. M-Bus (1T)	9950536
ABB B23 Electricity meter and CMeX20w External MCM, Wireless M-Bus	1100200
Current transformers (3-phase)	
ABB B24 Electricity meter, incl. M-Bus (1T)	9950558
ABB B24 Electricity meter and CMeX20w External MCM, Wireless M-Bus	1100201
Meter Connectivity Modules	
CMeX20 External MCM for ABB B21/B23/B24, M-Bus	1050010
CMeX20w External MCM for ABB B21/B23/B24, Wireless M-Bus	1050069

We have access to ABB's entire product range and offer M-Bus solutions for the older meters ODIN and DELTAplus as well. Please send a request to receive more information!

Wall-mounted electricity meters

Elvaco delivers wall-mounted electricity meters from Landis+Gyr, a Swiss company with more than 100 years of experience from meter manufacturing. For these meters, Elvaco has developed the Integrated Meter Connectivity Modules CMi1020 and CMi1020w.



Landis+Gyr E350

L+G E350 is an electricity meter for mounting directly on a wall or a meter board. The energy consumption is presented in Wh which ensures accurate energy analysis on an hourly basis. Other available data is current, power, number of power outages etc. The meters are offered with or without breaker functionality.

CMi1020, CMi1020w

CMi1020/CMi1020w is mounted directly in the Landis+Gyr E350 electricity meter to transmit data from meter to a receiving system via M-Bus (CMi1020) or Wireless M-Bus (CMi1020w). The Integrated Meter Connectivity Module is designed to initiate delivery of meter data immediately after startup.

Product	Wired M-Bus	Wireless M-Bus	Breaker	Item No.	E No.
L+G E350 (1-phase)					
L+G E350 ZCF AC Electricity meter & CMi1020 Integrated MCM, M-Bus (1T)	X			1100036	0981823
L+G E350 ZCF AB Electricity meter & CMi1020 Integrated MCM, M-Bus (1T)	X		X	1100037	0981824
L+G E350 ZCF AC Electricity meter & CMi1020w Integrated MCM, Wireless M-Bus		X		1100231	0981853
L+G E350 (3-phase)					
L+G E350 ZMF AC Electricity meter & CMi1020 Integrated MCM, M-Bus (1T)	X			1100038	0981825
L+G E350 ZMF AB Electricity meter & CMi1020 Integrated MCM, M-Bus (1T)	X		X	1100039	0981826
L+G E350 ZMF AC Electricity meter & CMi1020w Integrated MCM, Wireless M-Bus		X		1100230	0981855
Meter Connectivity Modules					
CMi1020 Integrated MCM for L+G E350, M-Bus				1050020	0981816
CMi1020w Integrated MCM for L+G E350, Wireless M-Bus, 1-phase				1100229	0981854
CMi1020w Integrated MCM for L+G E350, Wireless M-Bus, 3-phase				1050021	0981852

For information regarding antennas and cables, see section Mobile network on page 35

Wall-mounted electricity meters

Elvaco delivers wall-mounted electricity meters from the Danish company Kamstrup. For these meters, Elvaco has developed the Integrated Meter Connectivity Module CMi2140, which is mounted directly in the meter to enable collection of meter data and delivery of metering reports via the mobile network by a chosen schedule and integration protocol.



Kamstrup 162, 382, 351

Kamstrup 162M (1-phase) and Kamstrup 382M (3-phase) are directly connected electricity meters for registration of electrical energy, optimized for Smart Metering. The meter is also available as current transformer (Kamstrup 351C). All Kamstrup meters are fully electronic, i.e. does not contain any movable parts. For this reason the measurement is not affected by eventual impacts during transport or mounting.

CMi2140

For above Kamstrup meter Elvaco has developed the Meter Connectivity Module CMi2140, which is mounted directly in the meter and enables collection of meter data and delivery of metering reports via the mobile network.

Product	Wired M-Bus	Wireless M-Bus	GSM/GPRS	Breaker	Item No.
Kamstrup kWh 162 (1-phase)					
Kamstrup kWh 162 Electricity meter incl. M-Bus (1 T)	X				9950460
Kamstrup kWh 162 Electricity meter incl. Wireless M-Bus		X			9950461
Kamstrup kWh 162 Electricity meter and CMi2140 Integrated MCM (OT/O)*			X		1100207
Kamstrup kWh 162 Electricity meter with breaker incl. M-Bus (1 T)	X			X	9950497
Kamstrup kWh 162 Electricity meter with breaker incl. Wireless M-Bus		X		X	9950498
Kamstrup kWh 162 Electricity meter with breaker and CMi2140 Integrated MCM (OT/O)*			X	X	1100206
Kamstrup kWh 382 (3-phase)					
Kamstrup kWh 382 Electricity meter incl. M-Bus (1 T)	X				9950462
Kamstrup kWh 382 Electricity meter incl. Wireless M-Bus		X			9950463
Kamstrup kWh 382 Electricity meter and CMi2140 Integrated MCM (OT/O)*			X		1100208
Kamstrup kWh 382 Electricity meter with breaker incl. M-Bus (1 T)	X			X	9950465
Kamstrup kWh 382 Electricity meter with breaker incl. Wireless M-Bus		X		X	9950466
Kamstrup kWh 382 Electricity meter with breaker and CMi2140 Integrated MCM (OT/O)*			X	X	1100163
Kamstrup kWh 351 (3-phase)					
Kamstrup 351C CT Electricity meter incl. M-Bus (1 T)	X				9950467
Kamstrup 351C CT Electricity meter incl. Wireless M-Bus		X			9950468
Kamstrup 351C CT Electricity meter and CMi2140 Integrated MCM (OT/O)*			X		1100175
Meter Connectivity Modules					
CMi2140 Integrated MCM for Kamstrup 162/382/351 (OT/O), Gateway for mobile network*					1050107
Accessories - See page 35 for more information					
GSM/GPRS antenna for CMi2140					9950631

* Antenna is ordered separately

For information regarding antennas and cables, see section Mobile network on page 35

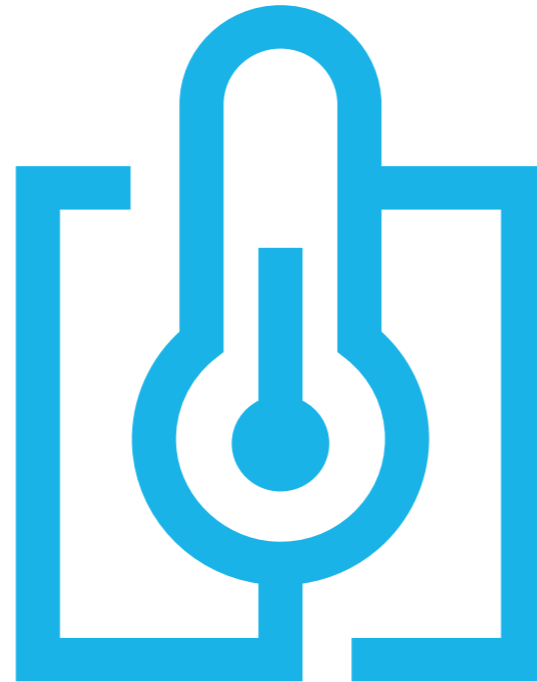
Sensors

Elvaco develops and manufactures temperature and humidity sensors for indoor and outdoor use.

The products allow you to easily and cost-effectively control your property based on actual indoor temperature. This provides a better indoor climate and optimizes your energy consumption. The products are available with Wired or Wireless M-Bus communication.

Increased energy efficiency

Measuring temperature and humidity is the basis for improving energy efficiency and ensuring a good indoor climate. By measuring the outdoor climate you can also provide your buildings with a reference.



Sensors

Elvaco offers temperature and humidity sensors for both indoor and outdoor use. The sensors are available with M-Bus, Wireless M-Bus or LoRaWAN, with or without display.



CMa10/CMa10w

CMa10 is a two-way M-Bus temperature and humidity sensor for indoor use. The sensor offers high accuracy, reliability and user-friendliness. Readout and configuration are easily performed via M-Bus, LCD display or by using a mobile phone (via NFC). CMa10 has a message feature that makes it possible to communicate with end-users via the device LCD display. The product supports six different language options: Swedish, English, German, Spanish, Finnish and Italian. The product is also available with Wireless M-Bus communication in CMa10w.



CMa11/CMa11w

CMa11 is a two-way M-Bus temperature and humidity sensor for indoor use. The sensor offers high accuracy, reliability and user-friendliness. Readout and configuration are easily performed via M-Bus or by using a mobile phone (via NFC). The product is also available with Wireless M-Bus communication in CMa11w.



CMa11L

CMa11L is a temperature/humidity sensor for high-accuracy measuring in indoor environments. The sensor uses LoRaWAN, a low-power wide-area network (LPWAN) communication technique, to offer a combination of long range and extensive battery life. By using EcoMode, the sensor achieves a guaranteed battery life of at least 12 years. CMa11L has high accuracy and user-friendliness. Configuration is easily performed with a mobile phone's NFC via Elvaco One-Touch Commissioning (OTC).



CMa12w

The CMa12w is a one-way wireless M-Bus temperature sensor for indoor use. The sensor offers high accuracy and user-friendliness as well as a long battery-life (up to 15 years). Readout and configuration are easily performed via wireless M-Bus or by using a mobile phone (via NFC).



CMa20/CMa20w

CMa20 is an outdoor temperature and humidity sensor which uses standard M-Bus communication. It has a high accuracy and provides information about momentaneous meter values as well as average meter values for the last hour and day. The product is also available with Wireless M-Bus communication in CMa20w.

Product	Item No.	E No.
Indoor sensors		
CMa10 Indoor sensor for temperature and humidity, with display, M-Bus (1T)	1050131	0981862
CMa10w Indoor sensor for temperature and humidity, with display, Wireless M-Bus	1050132	0981863
CMa11 Indoor sensor for temperature and humidity, M-Bus (1T)	1050133	0981864
CMa11w Indoor sensor for temperature and humidity, Wireless M-Bus	1050134	0981865
CMa12w Indoor sensor for temperature, Wireless M-Bus	1050135	0981866
CMa11L Indoor sensor for temperature and humidity, LoRaWAN	1050140	0981868
Outdoor sensors		
CMa20 Outdoor sensor for temperature and humidity, M-Bus (1T)	1050025	0981812
CMa20w Outdoor sensor for temperature and humidity, Wireless M-Bus	1050023	0981837

Meter modules

The right connectivity for your needs, retrofitted or preassembled with your meter.

External or integrated

Elvaco offers both internal (mounted in meter) and external meter connectivity modules. These are used together with a specific meter to perform scheduled readings, deliver meter data reports or enable the meter to communicate its meter data through M-Bus/Wireless M-Bus.

Communication

We offer Meter Connectivity Modules for mobile networks, M-Bus, Wireless M-Bus, LoRaWAN and NB-IoT.



Meter modules

Elvaco delivers meters from some of the largest manufacturers on the market. To several of these meters, Elvaco has developed Meter Connectivity Modules for projects where a high flexibility is needed at an attractive price point.



MCM for electricity and heat meters

Elvaco develops and delivers Meter connectivity modules (MCM) for meters from Landis+Gyr, Kamstrup, ABB and Itron. The modules enable meter reading, conversion of meter data to the M-Bus protocol and delivery of customized meter data reports through the mobile network.

Product	Meters	Item No.	See page
Meter Connectivity Modules for Electricity meters			
CMi1020 Integrated MCM, M-Bus	Landis+Gyr E350	1050020	26
CMi1020w Integrated MCM, Wireless M-Bus	Landis+Gyr E350	1050021	26
CMi2140 Integrated MCM (0T/0), Gateway for Mobile Network	Kamstrup 162, 382, 351	1050107	27
CMeX20 External MCM, M-Bus	ABB B21, B23, B24	1050010	25
CMeX20w External MCM, Wireless M-Bus	ABB B21, B23, B24	1050069	25
CMe2100 M-Bus Metering Gateway for Mobile Network	All M-Bus meters	1050006	12
CMe3000 M-Bus Gateway for Fixed Network	All M-Bus meters	1050015	11
Meter Connectivity Modules for Heat meters			
CMi2110 (gen.3) Integrated MCM (8T/128 meters), Gateway for Mobile Network	Landis+Gyr UH50, UC50	1050122	20, 21
CMi2130 (gen.3) Integrated MCM (8T/128 meters), Gateway for Mobile Network	Itron CF ECHO II, CF 51/55	1100244	22, 23
CMi4110Int Integrated MCM, LoRa, internal antenna	Landis+Gyr UH50, UC50	1050071	20, 21
CMi4110Ext Integrated MCM, LoRa, external antenna	Landis+Gyr UH50, UC50	1100301	20, 21
CMi4111 Integrated MCM, LoRa, internal antenna	Landis+Gyr T230/T330	-	24
CMi4130Int Integrated MCM, LoRa, internal antenna	Itron CF Echo II, CF 51/55	-	22, 23
CMi4130Ext Integrated MCM, LoRa, external antenna	Itron CF Echo II, CF 51/55	-	22, 23
CMi4140Int Integrated MCM, LoRa, internal antenna	Kamstrup Multical 403/603/803	-	-
CMi4140Ext Integrated MCM, LoRa, external antenna	Kamstrup Multical 403/603/803	-	-
CMi4160Int Integrated MCM, LoRa, internal antenna	Diehl Sharky 775	-	-
CMi4160Ext Integrated MCM, LoRa, external antenna	Diehl Sharky 775	-	-
CMi5110E Wireless M-Bus Receiver, external antenna	Landis+Gyr UH50, UC50	1050064	20, 21
CMi5110I Wireless M-Bus Receiver, internal antenna	Landis+Gyr UH50, UC50	1050067	20, 21
CMi6110 Integrated MCM, NB-IoT, external antenna	Landis+Gyr UH50, UC50	-	20, 21

For information regarding antennas and cables, see section Wireless M-Bus on page 34 and Mobile network on page 35



Accessories

Elvaco delivers all accessories needed for a well-working installation. This includes everything from basic accessories such as cables and antennas to more advanced products for controlling or reading.

Alarm and controlling

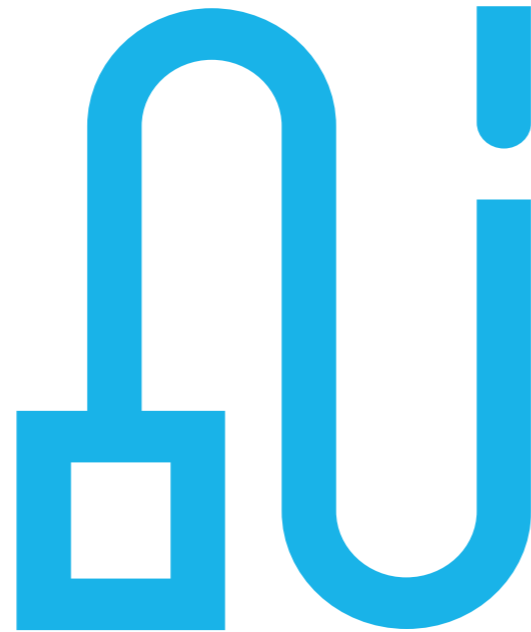
Elvaco offers products that enable controlling of a contact as well as monitoring and sending alarms at high or low values. This can, for example, be useful in laundries or in power poles for engine pre-heaters.

Simple troubleshooting

Our USB master is specially developed and designed for service work in the field. It enables easy reading and troubleshooting, which simplifies service and maintenance work.

Access to main meter

We offer a solution that allows two parties to gain access to the same main meter. This might for example be useful for real estate companies which need to read the same main meter via M-Bus.



Enclosures



Enclosures CM-Box

We offer enclosures of protection class IP55 in different sizes (3-12 DIN modules). The enclosures are made out of grey durable and halogen-free polystyrene, are easy to mount and can be sealed. The enclosures have several knockout holes where the supplied rubber bustings can be used to ensure safe cable mounting. All enclosures are delivered with terminal block and DIN rail.

All products sold by Elvaco have undergone extensive testing to minimize the risk of errors in field. The hardware is produced by subcontractors, certified with ISO 14001.

Product	Item No.
CM-Box 3 100 x 150 x 96 (w x h x d) mm, transparent door	1040065
CM-Box 3 100 x 150 x 96 (w x h x d) mm, grey door	1040116
CM-Box 5 125 x 200 x 122 (w x h x d) mm, transparent door	1040066
CM-Box 9 200 x 200 x 122 (w x h x d) mm, transparent door	1040102
CM-Box 12 250 x 200 x 122 (w x h x d) mm, transparent door	1040082

Antennas and antenna cables, Wireless M-Bus (868 MHz)



Wall-mounted antenna Wireless M-Bus

The wall-mounted antenna is connected to Wireless M-Bus products to increase their range of communication. Its durable design and low profile make it ideal when a discrete and reliable option is required. The antenna can be used both indoors and outdoors.

Product	Item No.
Wall-mounted antenna Wireless M-Bus (868 MHz)	9950627



Omni antenna Wireless M-Bus

The Omni antenna is an external omnidirectional antenna which is connected to Wireless M-Bus products to increase their range of communication. The antenna can be mounted on horizontal or vertical mast tubes with an outer diameter of 16-54 mm.

Product	Item No.
Omni antenna Wireless M-Bus (868 MHz) 0 dBi 45 cm	9950500
Omni antenna Wireless M-Bus (868 MHz) 8 dBi 145 cm	9950472



Magnetic mount antenna Wireless M-Bus

The magnetic mount antenna has a swivel functionality for flexible mounting. It is connected to Wireless M-Bus products to increase their range of communication.

Product	Item No.
Magnetic mount antenna (868 MHz), 1.5 m cable	9950470



Antenna cable for Omni antenna

The antenna cable is used to connect a CMeX50 or a CMi-box to an Omni antenna. The cable is of high quality to minimize cable losses. It is available in three different lengths: 5, 10 and 15 meters.

Product	Item No.
Antenna cable SMAm-Nm for Omni antenna (5 m)	9950453
Antenna cable SMAm-Nm for Omni antenna (10 m)	9950454
Antenna cable SMAm-Nm for Omni antenna (15 m)	9950066

Antennas and antenna cable, mobile network



Magnetic mount antenna for mobile network

The magnetic mount antenna is used to improve the signal coverage on the mobile network and is designed for mounting on metallic surfaces. The antenna is delivered with a 2.5 meter cable.

Product	Item No.
Magnetic mount antenna GSM/GPRS 10 cm, 2.5 m cable	9950001



Wall-mount antenna for mobile network

The wall-mount antenna is designed to meet the industrial demands of high performance and multi-installation capabilities. Its durable design and low profile make it ideal when a discrete and reliable option is required. The antenna is ground plane independent which enables installation on different materials. It is delivered with a cable of 1.5 or 3 meters.

Product	Item No.
Wall-mount antenna GSM/GPRS LP801G, 1.5 m cable	9950319
Wall-mount antenna GSM/GPRS LP801G, 3 m cable	9950320
Wall-mount antenna GSM/GPRS LP801, 1.5 m cable, MCX connection (for CMi2140)	9950631



Disc antenna for mobile network

The disc antenna is designed to meet the industrial demands on high performance and multi-installation capabilities. It has a durable design, low profile and is mounted with an internal nut, which makes it ideal to use when a discrete and reliable option is required. It is delivered with a cable of 0.5 or 2.5 meters.

Product	Item No.
Disc antenna GSM/GPRS, 0.5 m cable	9950060
Disc antenna GSM/GPRS, 2.5 m cable	9950059



Antenna cable

The antenna cable is used to connect a Gateway for mobile network to an antenna in cases where it needs to be relocated due to poor signal strength. The cable is of high quality to minimize cable losses and is available in two lengths, 5 and 10 meters.

Product	Item No.
Antenna cable SMAf-SMAm (5 m)	9950082
Antenna cable SMAf-SMAm (10 m)	9950084

Filter and amplifier for Wireless M-Bus



Filter and amplifier kit Wireless M-Bus (868 MHz)

The filter and amplifier kit is used to filter out interferences from nearby mobile base stations as well as increasing the range for wireless M-Bus receivers.

Product	Item No.
Filter and amplifier kit for Wireless M-Bus incl. power supply	1100219
Filter and amplifier kit for Wireless M-Bus incl. power supply in CM-Box 5	1100227

General cables



Patch cable

The patch cable is used to connect M-Bus Gateways to the fixed network. The cable is available in two different lengths, 1 and 3 meters.

Product	Item No.
Patch cable (For CMe3000 and CMe3100)	
Patch cable UTP Cat5e blue (1 m)	9950211
Patch cable UTP Cat5e blue (3 m)	9950155

Configuration and service



CMA35 Optical eye

CMA35 is an optical eye for mobile readout and configuration of all meters equipped with serial optical interface. The manufacturer and software independent design makes the CMA35 the perfect option for mobile readouts.

Product	Item No.	E No.
CMA35 Optical eye	1050104	0981836



CMA30 USB M-Bus master

CMA30 is specifically designed for mobile service. Together with a laptop, it is suitable for setup of individual M-Bus slaves and for fast and easy reading of small M-Bus systems. The LED indications make troubleshooting of M-Bus systems simple. CMA30 is opto-isolated and can operate up to 30 M-Bus slaves, making the product ideal for service purposes. USB cable is included.

Product	Item No.	E No.
CMA30 USB M-Bus master	1050103	0981839

Network



LTE Router in A-Box

The LTE router enables a Gateway, for example a CMe3100, to transmit data over the 4G network. The product can be delivered as a stand-alone alternative, fully assembled in a protective enclosure, or together with one of our CGc Boxes.

Product	Item No.	E No.
LTE Router in A-Box	1100247	N/A

Adapters



M-Bus Splitter for up to 4 M-Bus slaves

Our M-Bus Splitter enables two parties to gain access to the same main meter. Two M-Bus Gateways can be connected to the meter and register meter data individually. This can be useful for real-estate companies that need access to the same main meter.

Product	Item No.	E No.
M-Bus Splitter (4T)	1050013	0981815

I/O Modules



CMeX30 DIN mounted M-Bus I/O module

CMeX30 is a digital-to-analog converter with an output voltage range from 0-10 V or current output from 0-20 mA. It uses standard M-Bus by the IR interface, and is equipped with a unique IR Pass through functionality which makes it stackable.

Product	Item No.	E No.
CMeX30 M-Bus I/O module	1050014	0981838

Converters



PadPuls M2 M-Bus converter

PadPuls M2 enables conversion of pulses to M-Bus. It has two pulse inputs for e.g. water or electricity meters and has an optional rate functionality for energy and volume. The product has a robust and installation friendly enclosure for wall-mounting.

Product	Item No.	E No.
PadPuls M2 M-Bus converter	9950074	N/A



CMeX40 DIN mounted M-Bus I/O module

CMeX40 is an M-Bus I/O module with one input and one output. The product is used to control a contactor and read a closing contact. It uses standard M-Bus and does not need any external power supply.

Product	Item No.	E No.
CMeX40 M-Bus I/O module	1050002	0981814

Repeaters



Transformer 230V/24VAC

This 1-phase isolation transformer is mounted on a DIN rail and is used to convert voltages of 230V to 24V.

Product	Item No.	E No.
Transformer 230V/24VAC	9950538	N/A



Wireless M-Bus Repeater

This Wireless M-Bus Repeater listens for and repeats incoming Wireless M-Bus transmissions, and can be used to provide signal coverage in areas a Wireless M-Bus Receiver is not able to reach on its own. The product is delivered fully assembled in a protective enclosure for indoor and outdoor operation, ready to start using upon delivery.

Product	Item No.	E No.
Wireless M-Bus Repeater in A-Box	1100280	N/A

Elvaco Services

Elvaco Services offer services aimed at simplifying the everyday life of metering personnel in energy companies and real estate companies.

We accomplish this by delivering world-class energy metering and sub-metering, integrations and exports to your ERP/BMS and support by our skilled staff. Our collection system is also open which gives you the freedom to choose meters or easily integrate your existing meter installations.

Our offer

Elvaco Services give you as a customer a lot of options, and together we find the best solution for you. We offer: end customer visualization, exports and billing, secure communication and deep analysis.



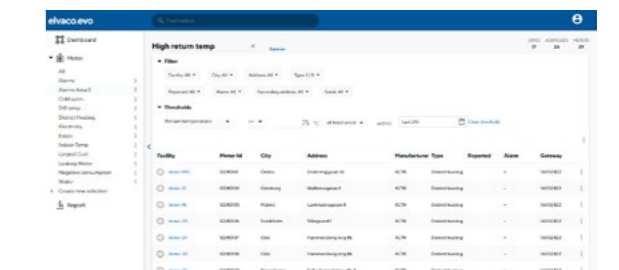
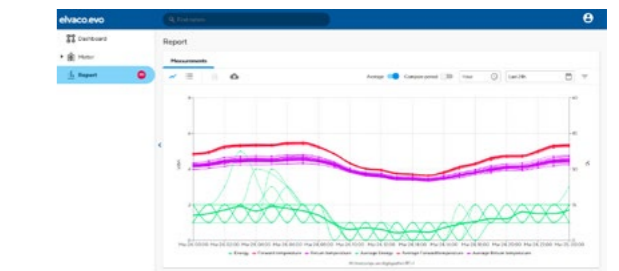
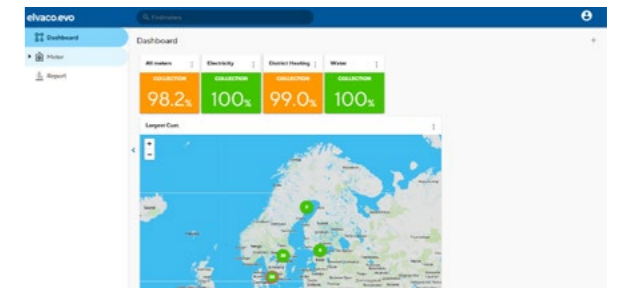
Elvaco Evo - Collection, visualization & analysis

Our cloud platform, Elvaco Evo, creates new possibilities for utilities, property owners and service providers to handle large amount of data and create both analyzes and data for energy optimization.

You get access to your meter data 24/7 and can track collection in real-time with visualization of alarms and personalized reports. The level of service is determined based on your needs and prerequisites - ranging from total responsibility to integration to existing metering system.

Benefits

- Access 24/7 to your meter data
- Track collection in real-time
- Choose whether you want to look at single meters or larger areas
- Map views and visualization of meter alarms
- Custom dashboard
- Export of data to systems for optimization, energy monitoring and billing



elvaco.evo

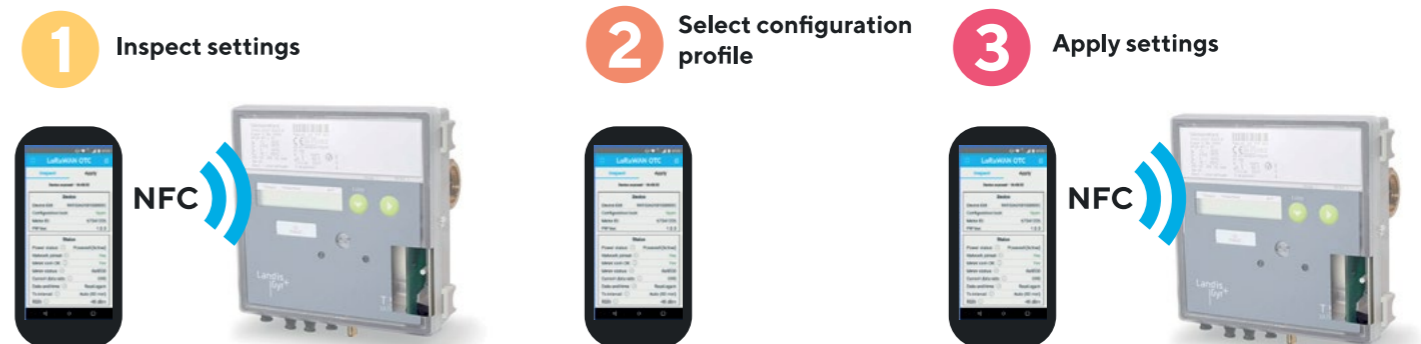
“VEAB and Elvaco have collaborated for a long time in the meter value collection process, and it has worked very well. It is important to ensure high quality readings, and to do so, you need a partner who understands your specific needs. Elvaco is such a partner for us.”

Peter Magnusson, Head of Division Measurement service Electricity, VEAB

One-Touch Commissioning

One thing that differentiates our products from other products on the market is that they are configured and deployed via the Elvaco One-Touch Commissioning solution.

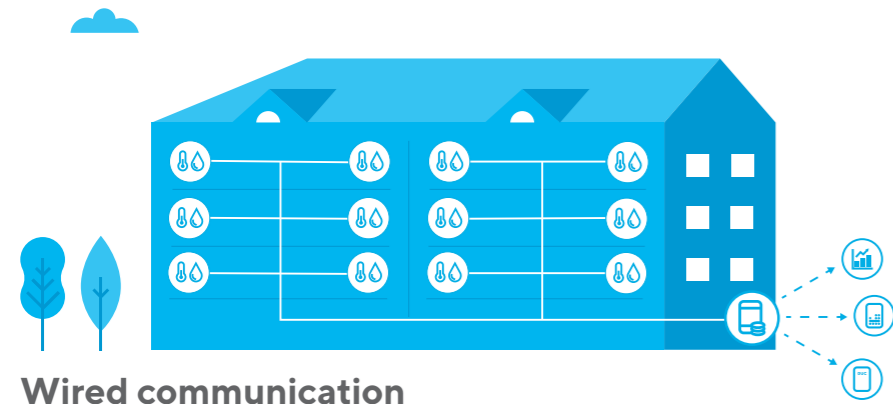
With an Android App, you can configure and deploy your products in an easy and secure way, change settings and manage user rights. Simplicity and security are the pillars of the OTC concept, but the main purpose is to digitalize the workflow.



Application examples

Elvaco offers various solutions based on your needs and the conditions on site.

Low-rise building



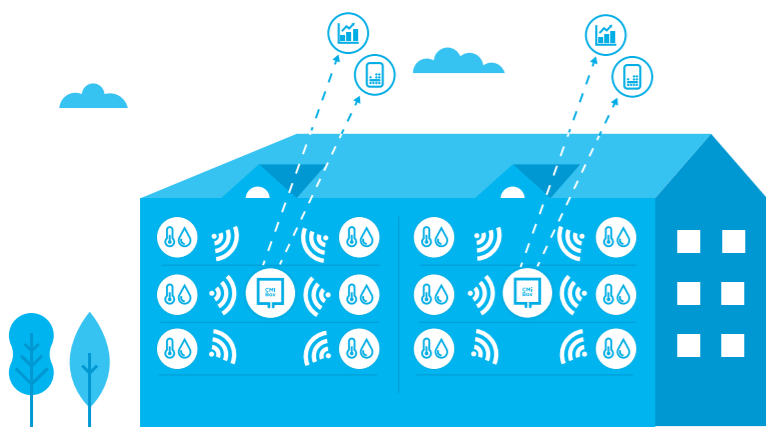
Wired communication

With indoor climate control as an option

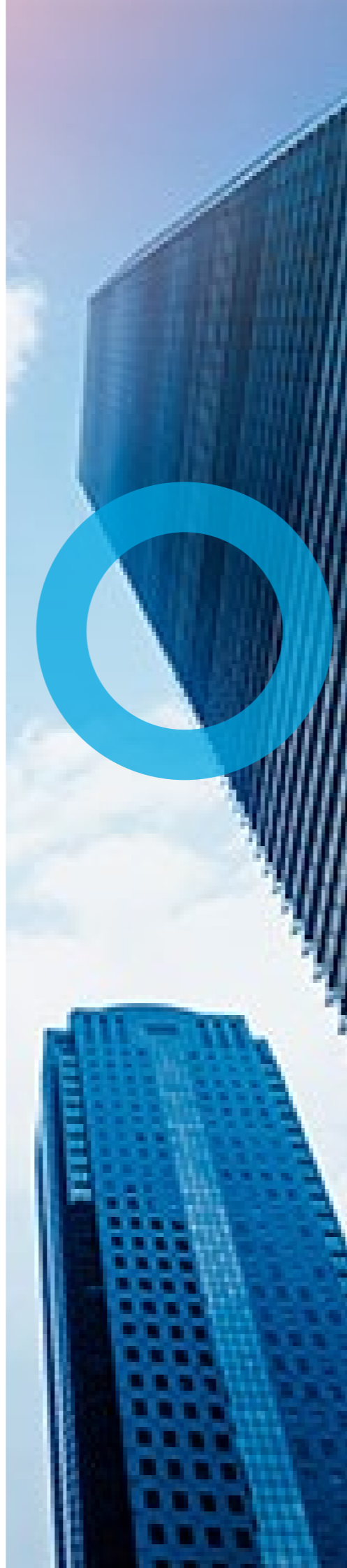


Wireless communication

With indoor climate control as an option



Wireless communication GSM/GPRS



High-rise building



Wired communication

With indoor climate control as an option

Wireless communication

With indoor climate control as an option

Wireless communication GSM/GPRS

Row house area

Wireless communication



Kabelgatan 2T, 434 37 Kungsbacka, Sweden

Telephone: +46 300 30250 · e-mail: sales@elvaco.com

www.elvaco.com